

Call Volume per Month

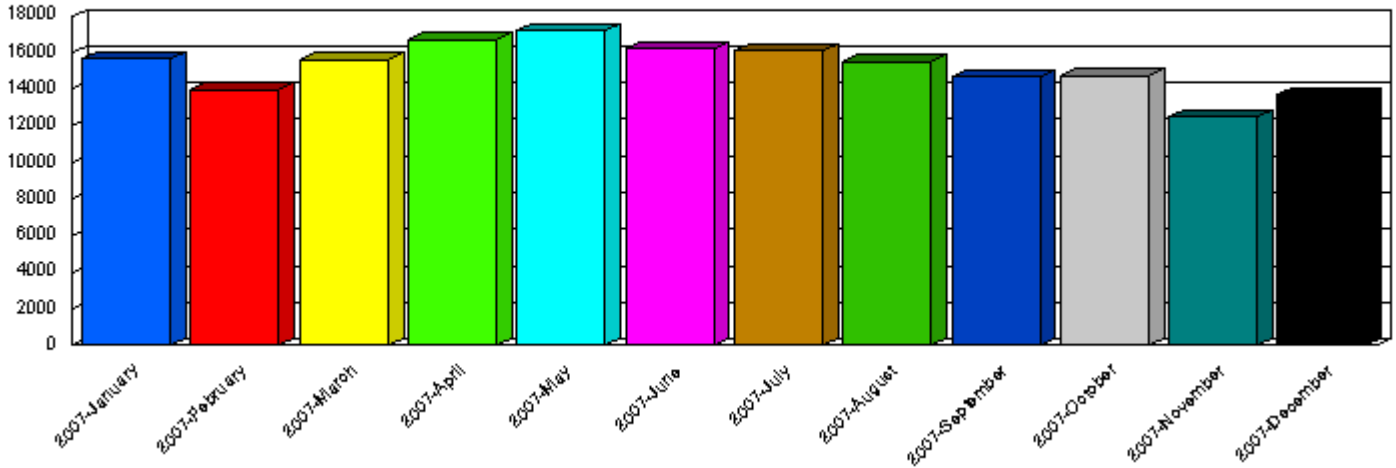
Report Period : 1/1/2007 12:00:00 AM To 12/31/2007 11:59:59 PM

Last Data Transfer : 1/7/2008 10:05:08 AM

Line Groups [↔]: 9-1-1

Call Types : Outgoing

Number of Calls : 182,636



<u>Month</u>	<u>Number of Calls</u>	<u>Percentage (%)</u>	<u>Cumulative (%)</u>
2007-January	15,624	8.55	8.55
2007-February	13,972	7.65	16.20
2007-March	15,610	8.55	24.75
2007-April	16,698	9.14	33.89
2007-May	17,208	9.42	43.32
2007-June	16,241	8.89	52.21
2007-July	16,097	8.81	61.02
2007-August	15,496	8.48	69.51
2007-September	14,725	8.06	77.57
2007-October	14,737	8.07	85.64
2007-November	12,490	6.84	92.48
2007-December	13,738	7.52	100.00
	182,636	100.00	