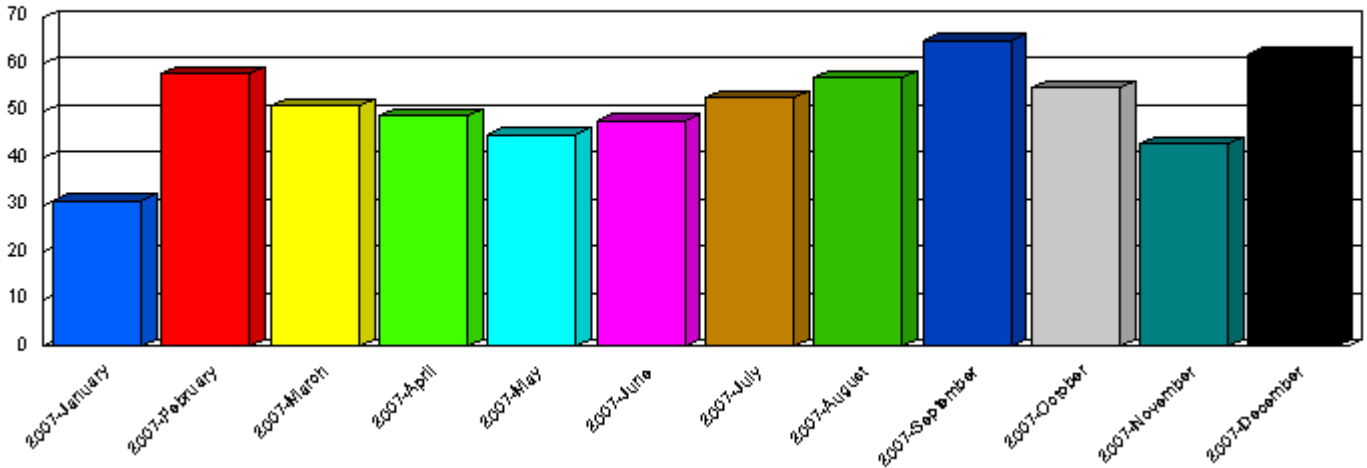


Call Volume per Month

Report Period : 1/1/2007 12:00:00 AM To 12/31/2007 11:59:59 PM
Last Data Transfer : 1/7/2008 10:05:08 AM
Classes of Service [=] : VOIP
Line Groups [=] : 9-1-1
Call Types : Incoming
Number of Calls : 617



Month	Number of Calls	Percentage (%)	Cumulative (%)
2007-January	31	5.02	5.02
2007-February	58	9.40	14.42
2007-March	51	8.27	22.69
2007-April	49	7.94	30.63
2007-May	45	7.29	37.93
2007-June	48	7.78	45.71
2007-July	53	8.59	54.29
2007-August	57	9.24	63.53
2007-September	65	10.53	74.07
2007-October	55	8.91	82.98
2007-November	43	6.97	89.95
2007-December	62	10.05	100.00
	617	100.00	