

Call Volume per Month

Report Period : 1/1/2007 12:00:00 AM To 12/31/2007 11:59:59 PM

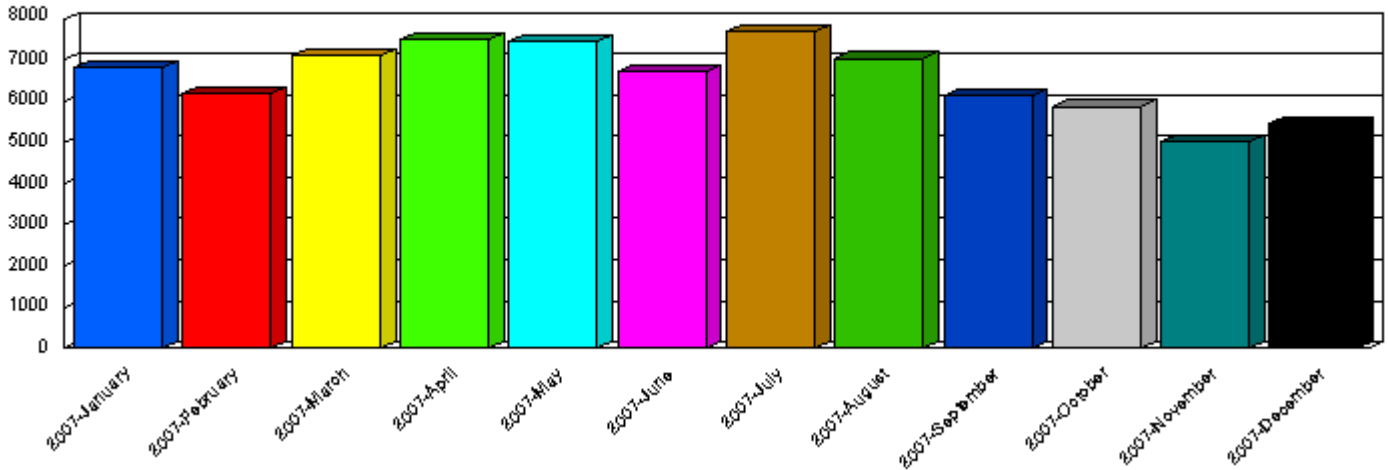
Last Data Transfer : 1/7/2008 10:05:08 AM

Classes of Service [<>] : VOIP,WPH2,WRLS

Line Groups [=] : 9-1-1

Call Types : Incoming

Number of Calls : 78,998



<u>Month</u>	<u>Number of Calls</u>	<u>Percentage (%)</u>	<u>Cumulative (%)</u>
2007-January	6,831	8.65	8.65
2007-February	6,171	7.81	16.46
2007-March	7,097	8.98	25.44
2007-April	7,486	9.48	34.92
2007-May	7,468	9.45	44.37
2007-June	6,715	8.50	52.87
2007-July	7,690	9.73	62.61
2007-August	7,033	8.90	71.51
2007-September	6,140	7.77	79.28
2007-October	5,871	7.43	86.71
2007-November	5,039	6.38	93.09
2007-December	5,457	6.91	100.00
	78,998	100.00	