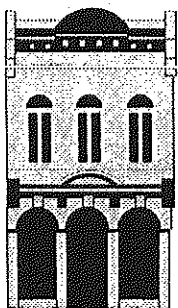


During an accidental release
of toxic chemicals . . .

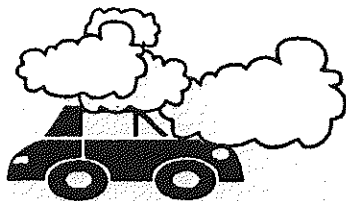
Do . . .



stay inside your
place of business,
home or In another
enclosed building.

Stay tuned to the Emergency
Alert Station on your
radio or television for further
information and guidance. In the
Wilmington area the EAS
station is WMNX (97.3)

Do Not . . .



go outside or attempt
to drive.



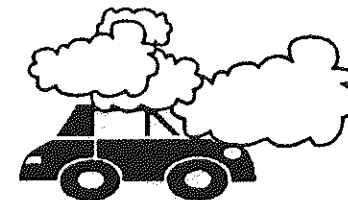
Emergency Planning Committee Participants

- New Hanover County Departments (5)
- General Electric
- Global Nuclear Fuels
- Corning
- Wilmington Fire & Police Department
- KOSA
- Occidental Chemical
- Takeda Vitamin & Food USA, Inc.
- UNC-W Safety Department
- U.S. Coast Guard Marine Safety Office
- New Hanover Health Network
- Koch Sulfur Products
- Eldorado Chemical
- N.C. Division of Emergency Management

What to Do . . .



What Not to Do . . .



*New Hanover County Department of
Emergency Management
and
New Hanover County Local
Emergency Planning Committee*

